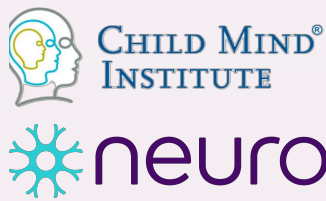


# Transfer-Learning U-Net Brain Extraction Tool (DeepBet) on Non-Human Primates



Xindi Wang<sup>1\*</sup>, Xin-Hui Li<sup>2</sup>, Jae Wook Cho<sup>2</sup>, Brian E. Russ<sup>3,4,5</sup>, Nanditha Rajamani<sup>2</sup>, Alisa Omelchenko<sup>2</sup>, Lei Ai<sup>2</sup>, Annachiara Korchmaros<sup>2</sup>, Stephen Sawiak<sup>6</sup>, R. Austin Benn<sup>7</sup>, Pamela Garcia-Saldivar<sup>8</sup>, Zheng Wang<sup>9,10</sup>, Ned H. Kalin<sup>11</sup>, Charles E. Schroeder<sup>3,12</sup>, R. Cameron Craddock<sup>13</sup>, Andrew S. Fox<sup>14</sup>, Alan C. Evans<sup>1</sup>, Adam Messinger<sup>15</sup>, Michael P. Milham<sup>2,3</sup>, Ting Xu<sup>2\*</sup>

Email: [sandywang.rest@gmail.com](mailto:sandywang.rest@gmail.com), [ting.xu@childmind.org](mailto:ting.xu@childmind.org)

**Download Source Code & Brain Masks:** <https://github.com/HumanBrainED/NHP-BrainExtraction>



Search or jump to...



Pull requests Issues Marketplace Explore

HumanBrainED / NHP-BrainExtraction

<> Code Issues Pull requests Actions Projects Wiki Security Insights

**Out-of-The-Box: docker pull sandywangrest/deepbet:1.0**



sandywangrest/deepbet

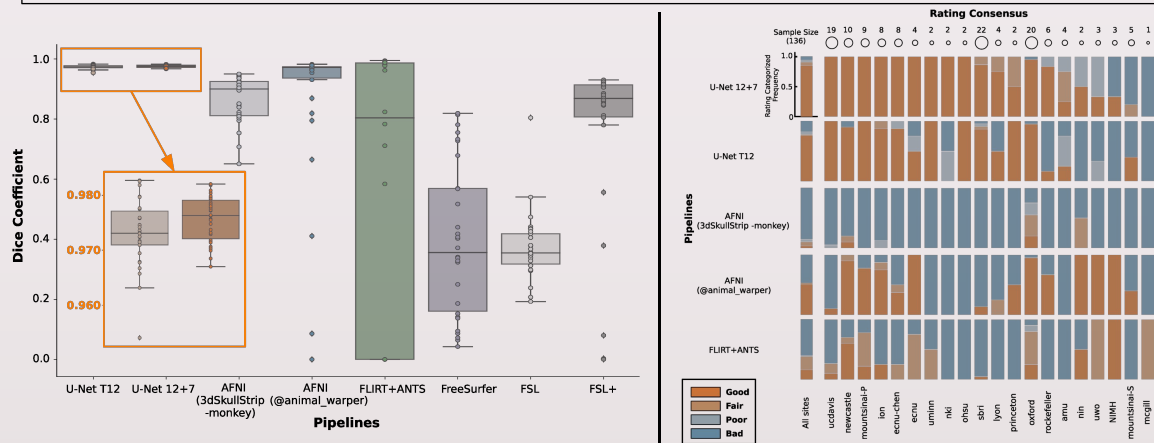
By [sandywangrest](#) • Updated 2 months ago

108 0  
Downloads Stars

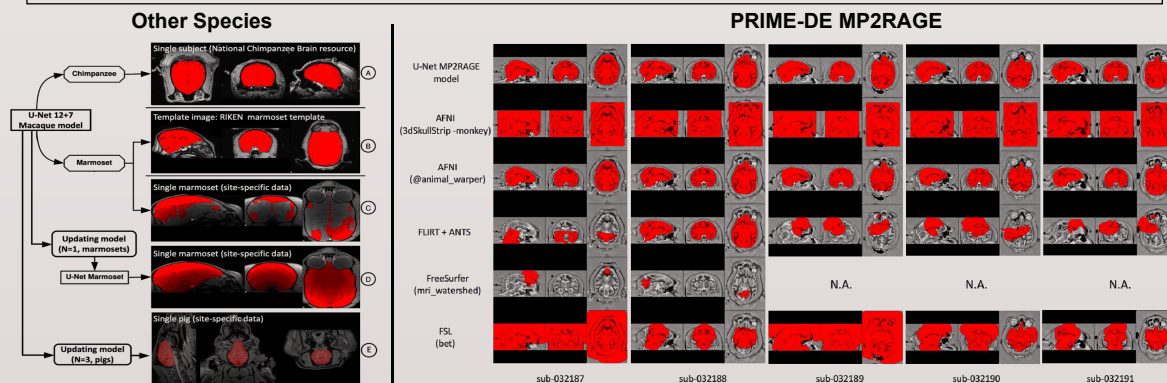
U-Net Model for Brain Extraction: Trained on Humans for Transfer to Non-human Primates

Container

**Compare to State-of-Art: Quantitative Examination & Consensus Rating**



**Transfer to Other Species & Sequence: Several Samples & 10~20 Min**



1) Montreal Neurological Institute, McGill University, Montreal, Québec, Canada. 2) The Child Mind Institute, 101 East 56th Street, New York, NY, 10022, USA. 3) Nathan Kline Institute, 140 Old Orangeburg Rd, Orangeburg, NY, USA. 4) Department of Neuroscience, Icahn School of Medicine at Mount Sinai, New York City, NY, USA. 5) Department of Psychiatry, New York University School of Medicine, New York City, NY, USA. 6) Translational Neuroimaging Laboratory, Department of Physiology, Development and Neuroscience University of Cambridge, Cambridge, CB2 3EG, UK. 7) Centro Nacional de Investigaciones Cardiovasculares (CNIC), Madrid, Spain. 8) Instituto de Neurobiología, Universidad Nacional Autónoma de México Campus Juriquilla, Querétaro, México. 9) Institute of Neuroscience, CAS Center for Excellence in Brain Science and Intelligence Technology, State Key Laboratory of Neuroscience, CAS Key Laboratory of Primate Neurobiology, Chinese Academy of Science, Shanghai, China. 10) University of Chinese Academy of Science, China. 11) Department of Psychiatry, University of Wisconsin School of Medicine and Public Health, 6001 Research Park Blvd, Madison, WI 53719. 12) Departments of Psychiatry and Neurology, Columbia University College of Physicians and Surgeons, New York, NY 10032, USA. 13) Department of Diagnostic Medicine, The University of Texas at Austin Dell Medical School. 14) Department of Psychology, and the California National Primate Research Center, University of California, Davis, One Shields Ave., Davis, CA 95616. 15) Laboratory of Brain and Cognition, National Institute of Mental Health, Bethesda, USA

**For more details:** Wang, X., Li, X. H., Cho, J. W., Russ, B. E., Rajamani, N., Omelchenko, A., ... & Xu, T. (2021). U-net model for brain extraction: Trained on humans for transfer to non-human primates. *NeuroImage*, 235, 118001.